

FEDERAL ENERGY REGULATORY COMMISSION  
Washington, DC 20426  
March 24, 2023

OFFICE OF ENERGY PROJECTS

Project No. 4639-033–New York  
Christine Falls Hydroelectric Project  
Ampersand Christine Falls Hydro, LLC

**Subject: Scoping Document 1 for the Christine Falls Hydroelectric Project, P-4639-033**

To the Parties Addressed:

The Federal Energy Regulatory Commission (Commission) is currently reviewing a license application filed on September 29, 2021, by Ampersand Christine Falls Hydro, LLC (Ampersand), for a subsequent minor license for the Christine Falls Hydroelectric Project (Christine Falls Project or project) (FERC No. 4639). The Christine Falls Project is located on the Sacandaga River near the Village of Speculator, Hamilton County, New York. The project does not occupy any federal land.

Pursuant to the National Environmental Policy Act (NEPA) of 1969, as amended, Commission staff will prepare either an environmental assessment (EA) or an environmental impact statement (EIS), which will be used by the Commission to determine whether, and under what conditions, to issue a new license for the project. To support and assist our environmental review and determine the level of analysis needed, we are beginning the public scoping process to ensure that all pertinent issues are identified and analyzed, and that the NEPA document is thorough and balanced.

We invite your participation in the scoping process and are circulating the attached Scoping Document 1 (SD1) to provide you with information on the project. We are also soliciting your comments and suggestions on our preliminary list of issues and alternatives to be addressed in the NEPA document.

At this time, we do not anticipate holding public or agency scoping meetings near the project site. Instead, we will conduct paper scoping for the project. However, we may hold a public environmental site visit to examine project facilities and lands within the project boundary at a later date.

SD1 is being distributed to both the applicant's distribution list and the Commission's official mailing list (see section 8.0 of the attached SD1). If you wish to be added to or removed from the Commission's official mailing list, please send your request by email to [FERCOnlineSupport@ferc.gov](mailto:FERCOnlineSupport@ferc.gov). In lieu of an email request, you may

submit a paper request. Submissions sent via the U.S. Postal Service must be addressed to: Kimberly D. Bose, Secretary, Federal Energy Regulatory Commission, 888 First Street NE, Room 1A, Washington, DC 20426. Submissions sent via any other carrier must be addressed to: Kimberly D. Bose, Secretary, Federal Energy Regulatory Commission, 12225 Wilkins Avenue, Rockville, Maryland 20852. All written or emailed requests must specify your wish to be removed from or added to the mailing list and must clearly identify the following on the first page: **Christine Falls Hydroelectric Project No. 4639-033**.

Please review SD1 and, if you wish to provide comments, follow the instructions in section 5.0, *Request for Information*. If you have any questions about SD1, the scoping process, or how Commission staff will develop the NEPA document for this project, please contact Andy Bernick at (202) 502-8660, or [andrew.bernick@ferc.gov](mailto:andrew.bernick@ferc.gov). Additional information about the Commission's licensing process and the Christine Falls Project may be obtained from our website, [www.ferc.gov](http://www.ferc.gov). The deadline for filing comments is **April 23, 2023**. The Commission strongly encourages electronic filings.

Enclosure: Scoping Document 1

---

---

SCOPING DOCUMENT 1

CHRISTINE FALLS HYDROELECTRIC PROJECT

NEW YORK

PROJECT NO. 4639-033



Federal Energy Regulatory Commission  
Office of Energy Projects  
Division of Hydropower Licensing  
Washington, DC

March 2023

---

---

## TABLE OF CONTENTS

<b>1.0</b>	<b>INTRODUCTION .....</b>	<b>5</b>
<b>2.0</b>	<b>SCOPING.....</b>	<b>6</b>
<b>2.1</b>	<b>PURPOSES OF SCOPING .....</b>	<b>6</b>
<b>3.0</b>	<b>PROPOSED ACTION AND ALTERNATIVES.....</b>	<b>8</b>
<b>3.1</b>	<b>NO-ACTION ALTERNATIVE .....</b>	<b>9</b>
<b>3.1.1</b>	<b>Existing Project Facilities.....</b>	<b>9</b>
<b>3.1.2</b>	<b>Existing Project Operation .....</b>	<b>9</b>
<b>3.2</b>	<b>APPLICANT’S PROPOSAL .....</b>	<b>11</b>
<b>3.2.1</b>	<b>Proposed Project Facilities and Operation .....</b>	<b>11</b>
<b>3.2.2</b>	<b>Proposed Environmental Measures .....</b>	<b>11</b>
<b>3.3</b>	<b>DAM SAFETY .....</b>	<b>12</b>
<b>3.4</b>	<b>ALTERNATIVES TO THE PROPOSED ACTION .....</b>	<b>13</b>
<b>3.5</b>	<b>ALTERNATIVES CONSIDERED BUT ELIMINATED FROM DETAILED STUDY .....</b>	<b>13</b>
<b>3.5.1</b>	<b>Project Decommissioning.....</b>	<b>13</b>
<b>4.0</b>	<b>SCOPE OF RESOURCE ISSUES.....</b>	<b>14</b>
<b>4.1</b>	<b>CUMULATIVE EFFECTS.....</b>	<b>14</b>
<b>4.1.1</b>	<b>RESOURCES THAT COULD BE CUMULATIVELY AFFECTED ....</b>	<b>14</b>
<b>4.2</b>	<b>RESOURCE ISSUES.....</b>	<b>14</b>
<b>4.2.1</b>	<b>Geologic and Soil Resources .....</b>	<b>15</b>
<b>4.2.2</b>	<b>Aquatic Resources .....</b>	<b>15</b>
<b>4.2.3</b>	<b>Terrestrial Resources .....</b>	<b>15</b>

4.2.4	Threatened and Endangered Species.....	15
4.2.5	Recreation, Land Use, and Aesthetics .....	15
4.2.6	Cultural Resources .....	16
4.2.7	Environmental Justice.....	16
4.2.8	Developmental Resources .....	16
5.0	REQUEST FOR INFORMATION.....	16
6.0	CURRENT PROCESSING SCHEDULE .....	18
7.0	COMPREHENSIVE PLANS .....	18
8.0	MAILING LIST.....	19

## **LIST OF FIGURES**

Figure 1. Location of the Christine Falls Project (source: Google Earth).....	7
Figure 2. Existing Facilities at the Christine Falls Project (source: License Application) .....	10

## SCOPING DOCUMENT 1

### Christine Falls Hydroelectric Project, No. 4639-033

#### 1.0 INTRODUCTION

The Federal Energy Regulatory Commission (Commission or FERC), under the authority of the Federal Power Act (FPA),<sup>1</sup> may issue licenses for terms ranging from 30 to 50 years for the construction, operation, and maintenance of non-federal hydroelectric projects. On September 29, 2021, Ampersand Christine Falls Hydro, LLC (Ampersand) filed an application for a subsequent minor license for the Christine Falls Hydroelectric Project (Christine Falls Project or project) (FERC No. 4639).

The Christine Falls Project is located on the Sacandaga River near the Village of Speculator, Hamilton County, New York (figure 1). The project does not occupy any federal land.

The Christine Falls Project is operated in a run-of-river mode, with a minimum flow of 25 cubic feet per second (cfs) into the bypassed reach during the months of March, April, and May, and a minimum flow of 10 cfs during the remainder of the year. The project has an average annual generation of 2,478 megawatt-hours. A detailed description of the project is provided in section 3.0.

The National Environmental Policy Act (NEPA) of 1969,<sup>2</sup> the Commission's regulations, and other applicable laws require that we independently evaluate the environmental effects of licensing the Christine Falls Project as proposed and consider reasonable alternatives to the licensee's proposed action.<sup>3</sup> We will prepare either an environmental assessment (EA) or an environmental impact statement (EIS) for the Christine Falls Project that describes and evaluates the probable effects, if any, of the licensee's proposed action and alternatives. The Commission's scoping process will help determine the required level of analysis and satisfy the NEPA scoping requirements,

---

<sup>1</sup> 16 U.S.C. § 791(a)-825(r).

<sup>2</sup> 42 U.S.C. §§ 4321-4370(f).

<sup>3</sup> The Council on Environmental Quality (CEQ) issued a final rule on April 20, 2022, revising its regulations for implementing NEPA (see *National Environmental Policy Act Implementing Regulations Revisions*, 87 Fed. Reg. 23453-70). The rule became effective on May 20, 2022. Commission staff intends to conduct its NEPA review in accordance with CEQ's new regulations.

irrespective of whether the Commission prepares an EA or an EIS.

## **2.0 SCOPING**

This Scoping Document 1 (SD1) is intended to advise all participants as to the proposed scope of the Commission's NEPA document and to seek additional information pertinent to this analysis. This document contains: (1) a description of the scoping process and current processing schedule for the license application; (2) a description of the licensee's proposed action and alternatives to the proposed action; (3) a preliminary identification of environmental issues; and (4) a preliminary list of comprehensive plans that are applicable to the project.

### **2.1 PURPOSES OF SCOPING**

Scoping is the process used to identify issues, concerns, and opportunities for mitigation or enhancement associated with a proposed action. In general, scoping should be conducted early in the planning stage of a project. The purposes of the scoping process are as follows:

- invite the participation of federal, state, and local resource agencies, Native American Tribes, non-governmental organizations (NGOs), and the public to identify significant environmental and socioeconomic issues related to the proposed project;
- determine the resource issues, depth of analysis, and significance of issues to be addressed in the NEPA document;
- identify how the project would or would not contribute to cumulative effects in the project area;
- identify reasonable alternatives to the proposed action that should be evaluated in the NEPA document;
- solicit, from participants, available information on the resources at issue; and
- determine the resource areas and potential issues that do not require detailed analysis during review of the project.

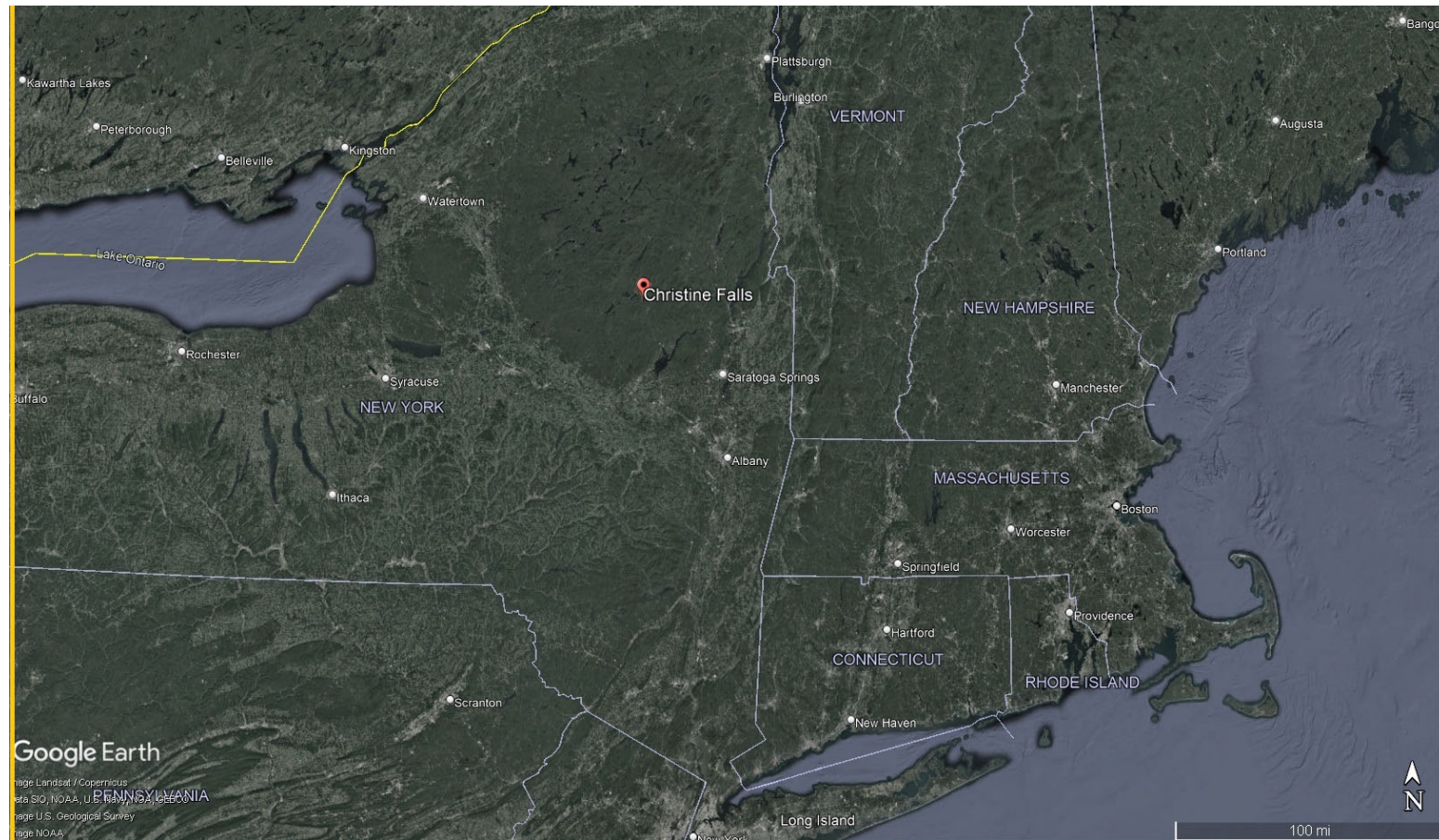


Figure 1. Location of the Christine Falls Project (source: Google Earth).

## **2.2 SCOPING COMMENTS**

During preparation of the NEPA document, there will be several opportunities for the resource agencies, Native American Tribes, NGOs, and the public to provide input. These opportunities will occur:

- during the public scoping process when we solicit comments on the scoping document;
- in response to the Commission's notice that the project is ready for environmental analysis; and
- after issuance of the NEPA document when we solicit written comments on the document.

We do not anticipate holding public or agency scoping meetings. Instead, we are soliciting your comments and suggestions on the preliminary list of issues and alternatives to be addressed in the NEPA document, as described in SD1. We may hold a public environmental site visit to examine project facilities and lands within the project boundary at a later date.

Please review this SD1 and, if you wish to provide written comments, follow the instructions contained in section 5.0, *Request for Information*. Following the scoping comment period, all issues raised will be reviewed and decisions made on the level of analysis needed. If we receive no substantive comments on SD1, then we will not prepare a Scoping Document 2 (SD2). Otherwise, an SD2 addressing any substantive comments received will be issued for informational use only by all participants or interested persons; no response will be required.

The NEPA document will address recommendations and input received during the scoping process. If our preliminary analysis indicates that any issues presented in this scoping document have little potential for causing significant effects, the issue(s) will be identified and the reasons for not providing a more detailed analysis will be given in the NEPA document.

## **3.0 PROPOSED ACTION AND ALTERNATIVES**

In accordance with NEPA, the environmental analysis will consider the following alternatives, at a minimum: (1) a no-action alternative, (2) the applicant's proposed action, and (3) alternatives to the proposed action.

### **3.1 NO-ACTION ALTERNATIVE**

Under the no-action alternative, the Christine Falls Project would continue to operate as required by the current project license (i.e., there would be no change to the existing environment). No new environmental protection, mitigation, or enhancement measures would be implemented. We use this alternative to establish baseline environmental conditions for comparison with other alternatives.

#### **3.1.1 Existing Project Facilities**

The project facilities consist of (figure 2): (1) a 15-foot-high, 152.6-foot-long concrete gravity dam (includes both abutments), with 3-foot-high wooden flashboards installed along the crest of the 135-foot-long spillway; (2) a reservoir with a surface area of 1.1 acres and a storage capacity of 4-acre feet at a normal water surface elevation of 1,699.7 feet;<sup>4</sup> (3) an intake structure; (4) a 613-foot-long steel penstock with a diameter of 6 feet that bifurcates into 3-foot-diameter, 45-foot-long and 4-foot-diameter, 32-foot-long penstocks; (5) a brick and concrete powerhouse containing two turbine-generator units (i.e., one 275-kilowatt (kW) unit and one 575-kW unit) with a total capacity of 850 kW; (7) a tailrace with a depth of 21 feet; (8) a 610-foot-long bypassed reach; (9) a 185-foot-long underground transmission line connecting the generating units to a 1,000-kilovolt-ampere step-up transformer; (10) a 9,315-foot-long, 4.16/13.2-kilovolt underground transmission line from the transformer to a point of interconnection; and (11) appurtenant facilities.

#### **3.1.2 Existing Project Operation**

The project is operated in a run-of-river mode, whereby outflow from the project approximates inflow. The project is operated to maintain a normal water surface elevation of 1,699.7 feet with 3-foot-high wooden flashboards in place.

The powerhouse contains two Francis turbine-generator units with a total capacity of 850 kW. The minimum and maximum hydraulic capacities of the generating units are 16 cfs and 80 cfs (275-kW unit) and 32 and 160 cfs (575-kW unit), respectively.

A continuous minimum flow of 25 cfs or inflow, whichever is less, is passed into the bypassed reach during the months of March, April and May, while a continuous minimum flow of 10 cfs or inflow, whichever is less, is provided for the bypassed reach at all other times of the year. The average annual generation is estimated to be 2,478 megawatt-hours.

---

<sup>4</sup> All elevations are in National Geodetic Vertical Datum of 1929.

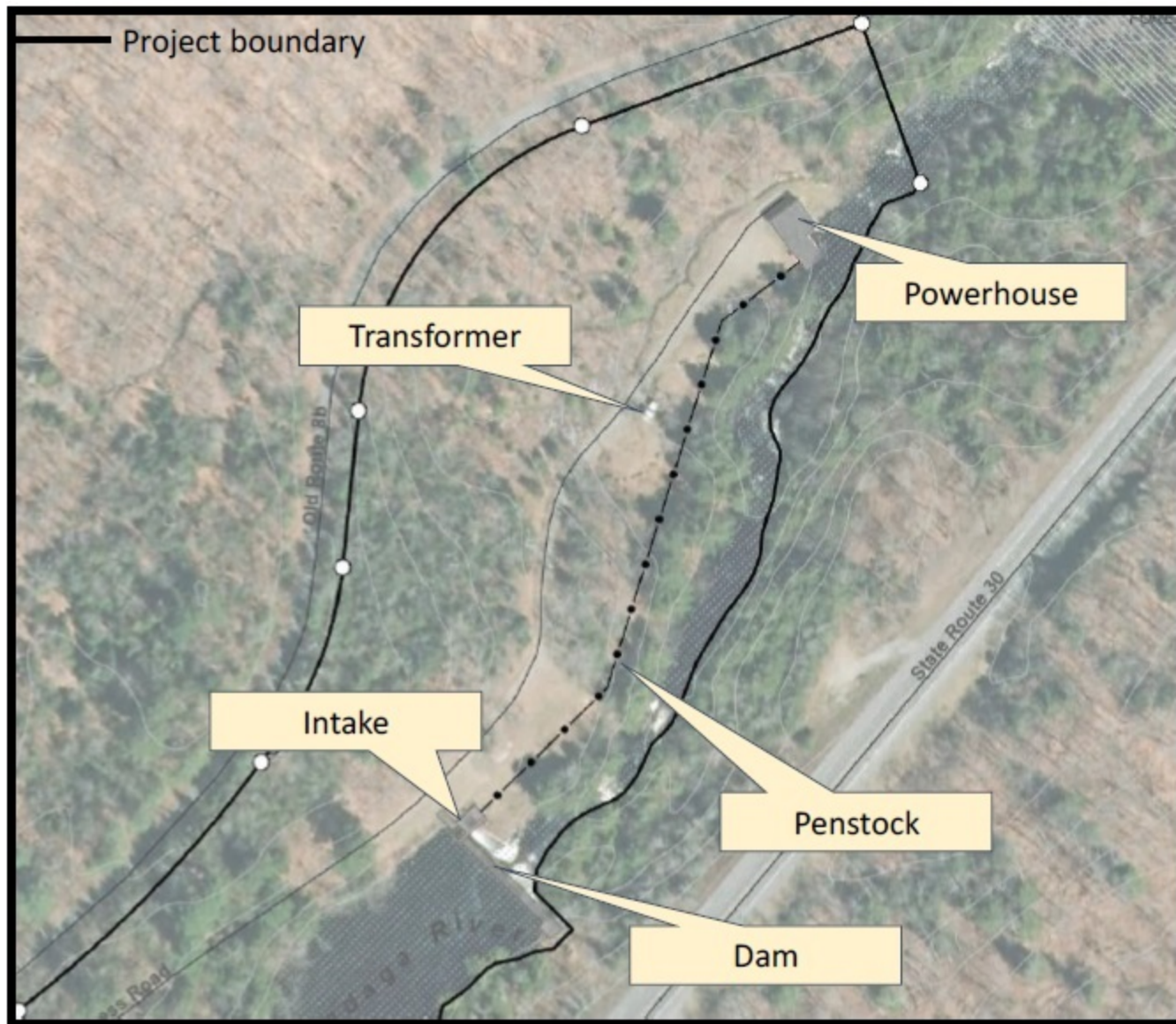


Figure 2. Existing Facilities at the Christine Falls Project (source: License Application)

## **3.2 APPLICANT'S PROPOSAL**

### **3.2.1 Proposed Project Facilities and Operation**

As described in section 3.1 of the Offer of Settlement (Settlement Agreement) filed on October 11, 2022,<sup>5</sup> Ampersand proposes to operate the project in a run-of-river mode with an impoundment level fluctuation limit of 3 inches from the dam crest or flashboards when in place (i.e., from a normal water surface elevation of 1,699.68 feet with flashboards in place, and 1,696.68 feet without flashboards in place).

### **3.2.2 Proposed Environmental Measures**

Ampersand proposes to operate the project with the following environmental protection, mitigation, and enhancement (PM&E) measures included in the Settlement Agreement and described below:

- Install trash racks with 1-inch clear spacing or the equivalent (e.g., an overlay-type system) whereby approach velocities are less than or equal to 2 feet per second, as measured 1 foot in front of the trash racks, as specified in section 3.2 of the Settlement Agreement;
- Install and maintain a year-round downstream fish passage structure, as specified in section 3.2 of the Settlement Agreement;
- Develop and implement, in consultation with FWS and New York DEC, a fishway operation and maintenance plan, as specified in section 3.2 of the Settlement Agreement;
- Implement recreational enhancements including installing signage to provide notice to the public of available recreational activities and maintaining the area around the intake, riprap, and project structures (including the powerhouse, bypassed reach, spillway, portage, and designated parking area), which will be open to the public during hours of operation, as specified in section 3.3 of the Settlement Agreement;
- Within 3 years of license issuance, provide two seasonal minimum flow regimes over the spillway and through the bypass gate: (a) a 15-cfs minimum

---

<sup>5</sup> Ampersand filed the Settlement Agreement on behalf of itself, the U.S. Fish and Wildlife Service, New York State Department of Environmental Conservation, American Whitewater, and the New York State Council of Trout Unlimited

flow or inflow, whichever is less, from June 1 to October 31, and (b) a 35-cfs minimum flow or inflow, whichever is less, from November 1 to May 31, as specified in section 3.4 of the Settlement Agreement;<sup>6</sup>

- Implement the Streamflow and Water Level Monitoring Plan (filed as Appendix A), as specified in section 3.4 of the Settlement Agreement;
- Implement the Invasive Species Management Plan (filed as Appendix B), as specified in section 3.5 of the Settlement Agreement;
- Implement the Bald Eagle Protection Plan (filed as Appendix C), as specified in section 3.6 of the Settlement Agreement; and
- Develop and implement, in consultation with FWS and the New York DEC, a monarch butterfly conservation plan to maintain a 3,000-square-foot area within the project boundary as habitat for monarch butterflies and other pollinators, as specified in section 3.7 of the Settlement Agreement.

In addition, Ampersand proposes to enhance recreational opportunities by sharing data on daily river conditions, constructing a parking area for two vehicles, and collecting and hauling trash.<sup>7</sup>

### **3.3 DAM SAFETY**

It is important to note that dam safety constraints may exist and should be taken into consideration in the development of proposals and alternatives considered in the pending proceeding. For example, proposed modifications to the dam structure, such as the addition of flashboards or fish passage facilities, could impact the integrity of the dam structure. As the proposal and alternatives are developed, the applicant must evaluate the

---

<sup>6</sup> The Settlement Agreement also requires that the following seasonal minimum flows be provided in the interim: (1) 10 cfs or inflow, whichever is less, from June 1 through February 28; and (2) 25 cfs or inflow, whichever is less, from March 1 through May 31.

<sup>7</sup> Ampersand proposed to collect and haul trash in the final license application and proposed to share data on daily river conditions and construct a parking area in an additional information response filed August 24, 2022. Ampersand made no indication that the Settlement Agreement superseded Ampersand's proposal in the license application or additional information response, and discussed these PM&E measures in an additional information response filed January 27, 2023, so in this SD1, we assume that these measures remain part of Ampersand's proposal.

effects and ensure that the project would meet the Commission's dam safety criteria found in Part 12 of the Commission's regulations and the Engineering Guidelines (<http://www.ferc.gov/industries/hydropower/safety/guidelines/eng-guide.asp>).

### **3.4 ALTERNATIVES TO THE PROPOSED ACTION**

Commission staff will consider and assess all alternative recommendations for operational or facility modifications, as well as PM&E measures identified by us, the agencies, Native American Tribes, NGOs, and the public.

### **3.5 ALTERNATIVES CONSIDERED BUT ELIMINATED FROM DETAILED STUDY**

At present, we propose to eliminate the following alternative from detailed study in the NEPA document.

#### **3.5.1 Project Decommissioning**

As the Commission has previously held, decommissioning is not a reasonable alternative to relicensing in most cases.<sup>8</sup> Decommissioning can be accomplished in different ways depending on the project, its environment, and the particular resource needs.<sup>9</sup> For these reasons, the Commission does not speculate about possible decommissioning measures at the time of relicensing, but rather waits until an applicant actually proposes to decommission a project, or a participant in a relicensing proceeding demonstrates that there are serious resource concerns that cannot be addressed with

---

<sup>8</sup> See, e.g., *Eagle Crest Energy Co.*, 153 FERC ¶ 61,058, at P 67 (2015); *Public Utility District No. 1 of Pend Oreille County*, 112 FERC ¶ 61,055, at P 82 (2005); *Midwest Hydro, Inc.*, 111 FERC ¶ 61,327, at PP 35-38 (2005).

<sup>9</sup> In the unlikely event that the Commission denies relicensing a project or a licensee decides to surrender an existing project, the Commission must approve a surrender "upon such conditions with respect to the disposition of such works as may be determined by the Commission." 18 C.F.R. § 6.2 (2022). This can include simply shutting down the power operations, removing all or parts of the project (including the dam), or restoring the site to its pre-project condition.

appropriate license measures and that make decommissioning a reasonable alternative.<sup>10</sup> Ampersand does not propose decommissioning, nor does the record to date demonstrate there are serious resource concerns that cannot be mitigated if the project is relicensed; as such, there is no reason, at this time, to include decommissioning as a reasonable alternative to be evaluated and studied as part of staff's NEPA analysis.

## **4.0 SCOPE OF RESOURCE ISSUES**

### **4.1 CUMULATIVE EFFECTS**

According to the Council on Environmental Quality's regulations for implementing NEPA (40 C.F.R. § 1508.7), a cumulative effect is the effect on the environment that results from the incremental effect of the action when added to other past, present, and reasonably foreseeable future actions, regardless of what agency (federal or non-federal) or person undertakes such other actions. Cumulative effects can result from individually minor but collectively significant actions taking place over a period of time, including hydropower and other land and water development activities.

#### **4.1.1 Resources That Could Be Cumulatively Affected**

Based on our review of the license application and preliminary staff analysis, we have not identified any resources that could be cumulatively affected by the proposed continued operation and maintenance of the Christine Falls Project. However, the need to consider cumulatively affected resources will be evaluated during the relicensing process.

### **4.2 RESOURCE ISSUES**

In this section, we present a preliminary list of environmental issues to be addressed in the NEPA document. We identified these issues, which are listed by resource area, by reviewing the license application and the Commission's record for the Christine Falls Project. This list is not intended to be exhaustive or final but contains the issues raised to date. After the scoping process is complete, we will review the list and determine the appropriate level of analysis needed to address each issue.

---

<sup>10</sup> See generally *Project Decommissioning at Relicensing: Policy Statement*, FERC Stats. & Regs., Regulations Preambles (1991-1996), ¶ 31,011 (1994); see also *City of Tacoma, Washington*, 110 FERC ¶ 61,140 (2005) (finding that unless and until the Commission has a specific decommissioning proposal, any further environmental analysis of the effects of project decommissioning would be both premature and speculative).

#### **4.2.1 Geologic and Soil Resources**

- No geologic and soil resources have been identified for analysis at this time.

#### **4.2.2 Aquatic Resources**

- Effects of continued project operation and maintenance on water quality, including dissolved oxygen and temperature, in the impoundment, bypassed reach, and Sacandaga River downstream of the project powerhouse.
- Effects of impoundment water level fluctuations from continued project operation on the habitat and biota within the project impoundment.
- Adequacy of proposed minimum flows of 15 cfs or inflow, whichever is less, from June 1 to October 31, and 35 cfs or inflow, whichever is less, from November 1 to May 31 for protection of aquatic species and maintenance of habitat in the bypassed reach.
- Effects of continued project operation on entrainment, impingement, and turbine-induced mortality on fishery resources to include resident and stocked fishes.

#### **4.2.3 Terrestrial Resources**

- Effects of continued operation and maintenance of the project and construction of proposed recreation and maintenance facilities on botanical resources, riparian and wetland habitat, and wildlife resources.
- Effects of continued operation and maintenance of the project and construction of proposed recreation and maintenance facilities on any state-listed rare, threatened, or endangered species identified by the New York DEC or other state agency.

#### **4.2.4 Threatened and Endangered Species**

- Effects of continued operation and maintenance of the project and construction of proposed recreation and maintenance facilities on candidate species (including the monarch butterfly) and species proposed for listing (including the tricolored bat) under the Endangered Species Act.

#### **4.2.5 Recreation, Land Use, and Aesthetics**

- Adequacy of existing and proposed recreational access and facilities to meet current and future recreational demand.

- Effects of continued project operation and maintenance on land use and aesthetic resources within the project area.
- Effects of proposed minimum flow releases of 15 cfs or inflow, whichever is less, from June 1 to October 31, and 35 cfs or inflow, whichever is less, from November 1 to May 31 into the bypassed reach on aesthetic resources.

#### **4.2.6 Cultural Resources**

- Effects of project construction, operation, and maintenance on any previously unidentified historic or archeological resources that may be eligible for inclusion in the National Register of Historical Places.

#### **4.2.7 Environmental Justice**

- Effects of project construction, operation, and maintenance on identified environmental justice communities.

#### **4.2.8 Developmental Resources**

- Effects of proposed or recommended environmental measures on project generation and economics.

### **5.0 REQUEST FOR INFORMATION**

We are asking federal, state, and local resource agencies, Native American Tribes, NGOs, and the public to forward to the Commission any information that will assist us in conducting an accurate and thorough analysis of the effects associated with licensing the Christine Falls Project. The types of information requested include, but are not limited to:

- information, quantitative data, or professional opinions that helps identify significant environmental issues;
- identification of, and information from any other EA, EIS, or similar environmental study (previous, on-going, or planned) relevant to the proposed licensing of the Christine Falls Project;
- existing information and any data that would help characterize existing environmental conditions and habitats and in the assessment of project effects on environmental resources; and
- documentation showing why any resources should be excluded from further study or consideration.

The requested information and comments should be submitted to the Commission no later than **April 23, 2023**. All filings must clearly identify the following on the first page: **Christine Falls Hydroelectric Project (P-4639-033)**. Scoping comments may be filed electronically via the Internet. See 18 C.F.R. 385.2001(a)(1)(iii) and the instructions on the Commission's website at <https://ferconline.ferc.gov/ferconline.aspx>. Commenters can submit brief comments up to 6,000 characters, without prior registration, using the eComment system at <https://ferconline.ferc.gov/QuickComment.aspx>. You must include your name and contact information at the end of your comments. For assistance, please contact FERC Online Support at [FERCOnlineSupport@ferc.gov](mailto:FERCOnlineSupport@ferc.gov) or toll free at 1-866-208-3676, or for TTY, (202) 502-8659. In lieu of electronic filing, you may submit a paper copy. Submissions sent via the U.S. Postal Service must be addressed to: Kimberly D. Bose, Secretary, Federal Energy Regulatory Commission, 888 First Street NE, Room 1A, Washington, DC 20426. Submissions sent via any other carrier must be addressed to: Kimberly D. Bose, Secretary, Federal Energy Regulatory Commission, 12225 Wilkins Avenue, Rockville, Maryland 20852.

Register online at <https://ferconline.ferc.gov/ferconline.aspx> to be notified via email of new filings and issuances related to this or other pending projects. For assistance, please contact FERC Online Support at [FERCOnlineSupport@ferc.gov](mailto:FERCOnlineSupport@ferc.gov).

Intervenors – those on the Commission's service list for this proceeding – are reminded that if they file comments with the Commission, they must also serve a copy of their filing on each person whose name appears on the official service list. Note that the list is periodically updated. The official service list can be obtained on the Commission's web site (<http://www.ferc.gov>) – click on Documents and Filing and click on eService – or call the Office of the Secretary, Dockets Branch at (202) 502-8715. In addition, if any party files comments or documents with the Commission relating to the merits of an issue that may affect the responsibilities of a particular resource agency, they must also serve a copy of the document on the resource agency.

Any questions concerning how to file written comments with the Commission should be directed to Andy Bernick at (202) 502-8660 or [andrew.bernick@ferc.gov](mailto:andrew.bernick@ferc.gov). Additional information about the Commission's licensing process and the Christine Falls Project may be obtained from the Commission's website, [www.ferc.gov](http://www.ferc.gov).

## 6.0 CURRENT PROCESSING SCHEDULE

The application will be processed according to the following schedule. Revisions to the schedule will be made as appropriate.

<b><u>Major Milestone</u></b>	<b><u>Target Date</u></b>
Scoping Document 1 Issued	March 2023
Scoping Document 1 Comments Due	April 2023
Scoping Document 2 Issued (if necessary)	May 2023
Ready for Environmental Analysis Notice Issued	May 2023
Deadline for Filing Comments, Recommendations, and Agency Terms and Conditions/Prescriptions	August 2023

If Commission staff determines that there is a need for additional information or additional studies, the issuance of the Ready for Environmental Analysis notice could be delayed. If this occurs, all subsequent milestones would be delayed by the time allowed for Ampersand to respond to the Commission's request.

## 7.0 COMPREHENSIVE PLANS

Section 10(a)(2) of the FPA, 16 U.S.C. section 803(a)(2)(A), requires the Commission to consider the extent to which a project is consistent with federal and state comprehensive plans for improving, developing, or conserving a waterway or waterways affected by a project. The staff has preliminarily identified and reviewed the plans listed below that may be relevant to the Christine Falls Project. Agencies are requested to review this list and inform the Commission staff of any changes. If there are other comprehensive plans that should be considered for this list that are not on file with the Commission, or if there are more recent versions of the plans already listed, they can be filed for consideration with the Commission according to 18 C.F.R. § 2.19 of the Commission's regulations. Please follow the instructions for filing a plan at <https://www.ferc.gov/media/list-comprehensive-plans>.

The following is a list of comprehensive plans currently on file with the Commission that may be relevant to the Christine Falls Project:

Adirondack Park Agency. 1985. Adirondack Park state land master plan. Ray Brook, New York. January 1985.

Adirondack Park Agency. Undated. New York State wild, scenic, and recreational rivers system field investigation summaries. Albany, New York.

National Park Service. The Nationwide Rivers Inventory. Department of the Interior, Washington, D.C. 1993.

New York Department of Environmental Conservation. 1979. Hudson River Basin water and related land resources: Level B study report and environmental impact statement. Albany, New York. September 1979.

New York Department of Environmental Conservation. 1985. New York State Wild, Scenic, and Recreational River System Act. Albany, New York. March 1985.

New York State Office of Parks, Recreation, and Historic Preservation. New York Statewide Comprehensive Outdoor Recreation Plan (SCORP): 2003-2007. Albany, New York. January 2003.

State of New York Hudson River Regulating District. 1923. General plan for the regulation of the flow of the Hudson River and certain of its tributaries. Albany, New York. June 7, 1923. 63 pp.

U.S. Fish and Wildlife Service. Canadian Wildlife Service. 1986. North American waterfowl management plan. Department of the Interior. Environment Canada. May 1986.

U.S. Fish and Wildlife Service. Undated. Fisheries USA: the recreational fisheries policy of the U.S. Fish and Wildlife Service. Washington, D.C.

## 8.0 MAILING LIST

The list below is the Commission's official mailing list for the Christine Falls Project included in this scoping document. If you want to receive future mailings for this proceeding and are not included in the list below, please send your request by email to [FERCOnlineSupport@ferc.gov](mailto:FERCOnlineSupport@ferc.gov). In lieu of an email request, you may submit a paper request. Submissions sent via the U.S. Postal Service must be addressed to: Kimberly D. Bose, Secretary, Federal Energy Regulatory Commission, 888 First Street NE, Room 1A, Washington, DC 20426. Submissions sent via any other carrier must be addressed to: Kimberly D. Bose, Secretary, Federal Energy Regulatory Commission, 12225 Wilkins Avenue, Rockville, Maryland 20852. All written or emailed requests to be added to the mailing list must clearly identify the following: **Christine Falls Hydroelectric Project (P-4639-033)**. You may use the same method if requesting removal from the mailing list below.

Register online at <https://ferconline.ferc.gov/FERCOOnline.aspx> to be notified via email of new filings and issuances related to this project or other pending projects. For assistance, please contact FERC Online Support at [FERCOOnlineSupport@ferc.gov](mailto:FERCOOnlineSupport@ferc.gov) or toll free at 1-866-208-3676, or for TTY, (202) 502-8659.

Elizabeth Whittle Aetna Life Insurance Company Nixon Peabody, LLP 799 9th St NW, Ste 500 Washington, DC 20001	Jason Huang, Director Ampersand Christine Falls Hydro, LLC 717 Atlantic Ave Ste 1A Boston, MA 02111
Carolyn Elefant Hydro Investors, Inc. Law Offices of Carolyn Elefant 4704 N Chelsea Ln Bethesda, MD 20814-3714	Paul Nolan Hydro Investors, Inc. Energy Consultant 5515 17th Street North Arlington, VA 22205-2722
Thomas McDonald Dam Safety Engineer New York State Canal Corporation 30 South Pearl Street Albany, NY 12207	Sita Crounse Associate Attorney New York State Department of Environmental Conservation 625 Broadway Albany, NY 12233
Director Texas Railroad Commission (NGPA) P.O. Box 12967 Austin, TX 78711-2967	Legal Department Niagara Mohawk Power Corporation 300 Erie Blvd W Syracuse, NY 13202-4201
Amanda Bossie Office of the Solicitor U.S. Department of Interior 15 State Street, 8th Floor Boston, MA 02109	Andrew Tittler Attorney-Advisor U.S. Department of Interior 15 State Street, 8th Floor Boston, MA 02109-3502
Secretary (OA) U.S. Fish and Wildlife Service New York Field Office 3817 Luker Road Cortland, NY 13045	